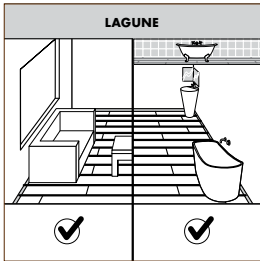
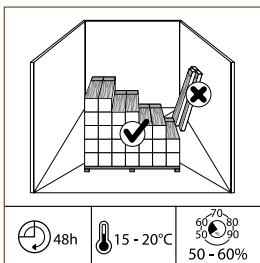


For best results, it is essential that you follow the installation instructions exactly.

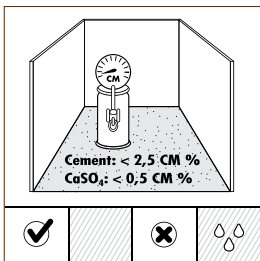


The Quick-Step® Lagune floor is suitable for installation in regular rooms as well as bathrooms.

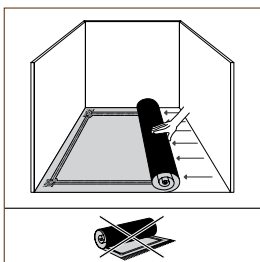
PREPARATION



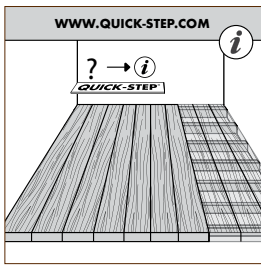
Let the planks acclimatize for 48 hours in the unopened packaging at the normal room temperature, in the middle of the room where the floor is to be installed. The ideal conditions are 15-20°C (59-68°F) at a relative humidity of 50-60%.



Fresh screed must dry for at least 1 week per cm thickness up to 4 cm and 2 weeks per cm thickness over 4 cm, with sufficient ventilation. For example, a 6 cm screed must dry for at least 8 weeks. For the thickness over 6 cm you must add 3 to 4 weeks. The moisture content must be less than 2.5% for cement-bound screed (CM method) and 0.5% for an anhydrite-bound screed.



Remove any damp-open floor covering (carpet, needle felt, etc.) first. Damp-proof floor covering (PVC, linoleum, etc.) does not have to be removed. Always use an underlay. We recommend the use of Quick-Step® underlay.



WOODEN SUBFLOOR:

Remove any existing floor covering first.

No signs of mould and/or insect infestations should be present.

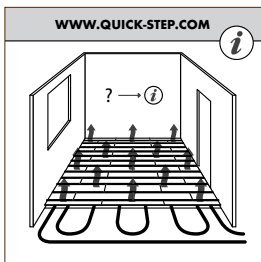
Make sure the subfloor is level. Nail down any loose parts.

If your plank floor is on the ground level, lay a plastic foil first (Quick-Step® Screen).

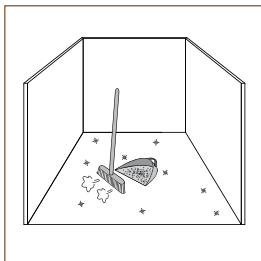
Apply a levelling floor (Quick-Step® Softboard) on top of this. For a perfect subfloor preparation, it is recommended to lay a Quick-Step® underlay on top of the Softboard to level any unevenness between the Softboard planks.

Install the new floor at ninety degrees to the existing subfloor.

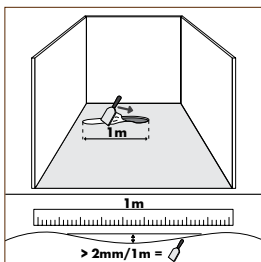
The crawl space under the plank floor must be sufficiently ventilated. Remove any obstacles and make sure there is sufficient ventilation (minimum 4 cm² total ventilation openings per m² of floor). The moisture content of the wood must not exceed 10%.



Additional instructions apply for floor heating. [Click here for more information.](#)



Make sure the floor base is flat, clean, firm and dry.

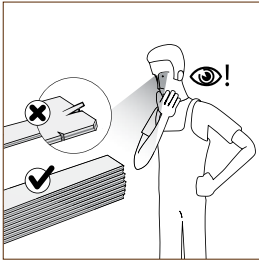


Make sure the floor base is flat. Any unevenness greater than 2 mm over the length of 1 meter must be smoothed out.

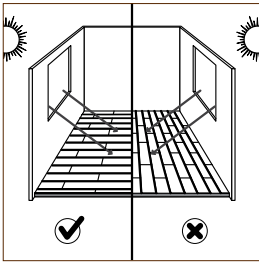
Check whether the old skirting-board can be removed. You can also leave the skirting on the wall and finish the floor with Quick-Step® profiles.

Check that the doors can still open and close after the floor and underlay have been installed (minimum + 1 cm).

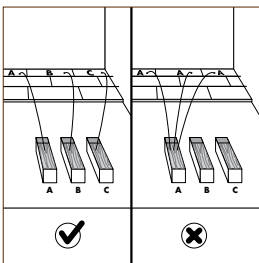
FOCUS POINTS



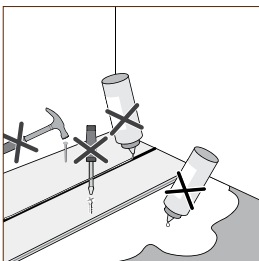
Inspect all planks in sufficient light before and during installation. Planks with visible defects must never be used.



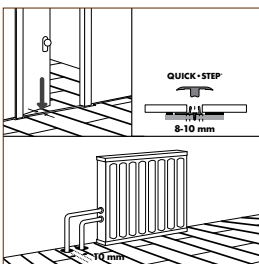
The floor should preferably be installed parallel to how the light enters the room (visually more attractive).



Make sure the panels are mixed sufficiently when you install them, so that you do not end up with too many identical, light or dark panels next to each other.

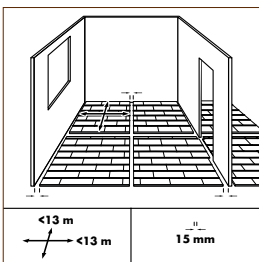


Uniclic® is a revolutionary system for installing floating laminate floors without using glue. The panels can be clicked together easily thanks to the ingenious shape of the tongue and groove



Wood is the main component of this Quick-Step® floor. Because room humidity can vary – for example, between summer and winter – it is vital that the floor is able to expand and contract. That's why you must leave an expansion joint on all sides of the floor of minimum 8 to 10 mm, also around pipes, under doors and at doorsteps. Remember that the floor may move in one direction.

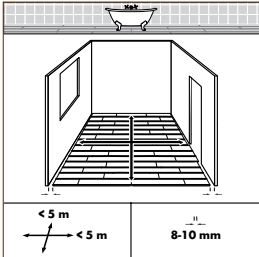
In any case, make sure there is an expansion joint between different rooms (under doors, for example). These expansion joints are sealed with a profile attached to the subfloor.



Large rooms must have expansion joints every 13 m breadthwise to the panels and every 13 m lengthwise. Expansion and contraction are linear, so the greater the surface area, the greater the tolerances need to be.

Never install Quick • Step® Lagune in damp rooms (such as bathrooms) more than 5 metres long.

INSTALLATION



In addition to the standard tools (such as a hammer, saw, pencil, tape measure) for laying wooden floors, you will need the following accessories:

installation kit (crowbar, spacers and special tapping block suitable for Uniclic®) – underlay system: Use an underlay that provides a stable foundation for the floor, such as Quick • Step® Unisound underlay.

maintenance products

The use of accessories other than Quick-Step® accessories may cause damage to the Quick-Step® floor. In that case the warranty provided by Quick-Step® will be void. For this reason we would advise you to use only Quick-Step® accessories, which have been specially designed and tested for use with Quick-Step® floor panels.

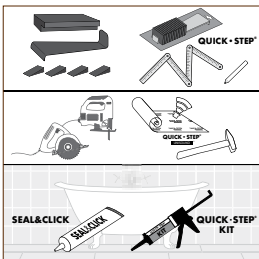
When laying Quick • Step® Lagune in damp rooms (such as bathrooms) you will also need Quick • Step® Seal & Click and Quick • Step® Kit in addition to the aforementioned tools.

You can choose where you want to begin laying. Think about what will be the easiest way to install the floor. We will demonstrate the installation for right-handed people, from left to right. You can work in the other direction if you want.

Uniclic® is unique because you can lay the planks in different ways.

Along the long or short side of the planks: Position the panel at an angle of 20-30° to the panel already installed. Move the panel to be fitted slightly up and down, while at the same time exerting a forward pressure. The panels will then click into place together.

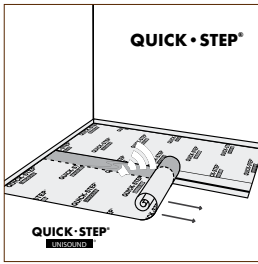
Along the short side of the planks: With Uniclic you can also tap the planks together without lifting them. For this method you must use the special Uniclic tapping block. Do not join the planks together with a single tap. To avoid damaging the planks, tap the planks together gradually.



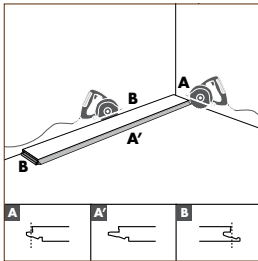
First lay the underlay across the breadth of the room and then gradually as you lay the planks.

It is vital that you use a levelling underlay to smooth away any unevenness in the floor base. The specially developed Quick-Step® 2in1 underlay floors have a damp-proof, insulating, noise-reducing and levelling function. The level top layer ensures easy laying of the laminate panels and facilitates ample expansion afterwards. You can find more information about Quick-Step® 2in1 underlay floors and how to use them on the package of your underlay floor or from your dealer. If the underlay is already attached to the floor panels, you only need to install 150 µ plastic foil with the adhesive tape provided.

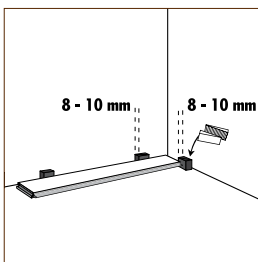
Let the foil extend upwards against the wall before cutting it to size. A skirting-board can be attached to the wall later.



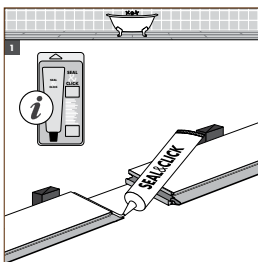
Begin the first row with a whole plank. From the first panel, saw off the groove on the long side as well as the tongue on the short side. From the other planks of the first row, only saw off the groove on the long side.



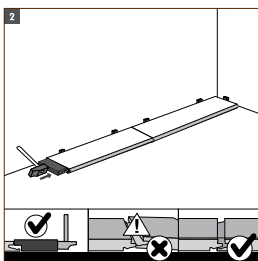
Put the plank with sawn off sides against the walls. Put spacers from the installation kit between the planks and the wall. This will ensure that your expansion joint is wide enough: 8 to 10 mm.



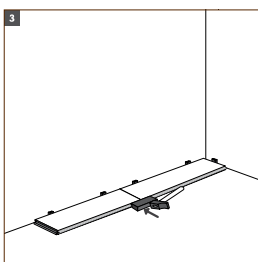
When installing Quick-Step® in damp rooms (such as bathrooms) you must use Quick-Step® Seal & Click to seal the short sides of the Quick-Step® Lagune planks. Do not apply under the rubber strip on the long sides. Not suitable for use with other Quick-Step® floors. Carefully read the care instructions on the package.



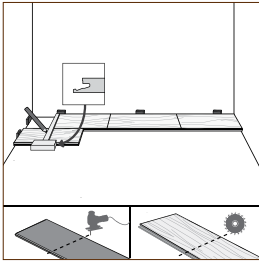
Tap the cross joint between these panels snugly together using the Uniclic tapping block. Make sure both panels are level on the subfloor and that you position the tapping block as indicated in the diagram to avoid damage.



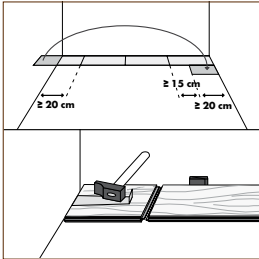
Position the Uniclic tapping block over the short joint between the panels and tap carefully until the panels fully align.



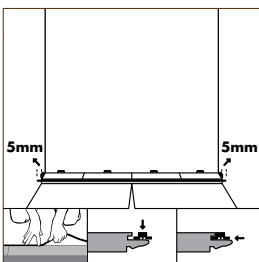
Of course you also need to saw the panels. To obtain a clean cut, the top surface should face down when you use a jigsaw, or circular handsaw and up when you use a handsaw or a crosscut saw.



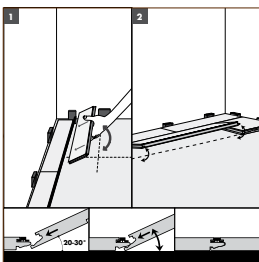
Ensure that the end joints of the panels in two successive rows are never in line. Always ensure that the joints are staggered by at least 15 cm. In places where it is too difficult to install the Unilic planks with the tapping block (e.g. against the wall), you can tap them together using the crowbar and a hammer.



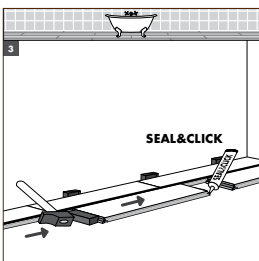
Apply the rubber strip as indicated in the diagram. It is very important that the rubber strips can expand and contract. Cut them 5 mm too long.



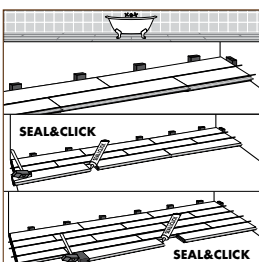
Click the first panel of the second row in the previous row. Also click the second panel of the second row in the previous row.



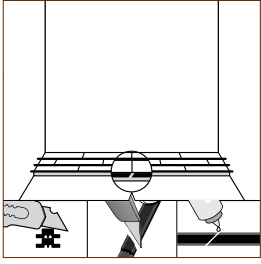
Apply Quick•Step® Seal & Click in the joint on the short side when laying Quick•Step® Lagune in damp rooms (such as bathrooms) and then tap the cross joints carefully together using the Unilic tapping block.



Repeat this installation method for the subsequent rows. When installing a Lagune floor in damp rooms (such as bathrooms) always remember to use Quick•Step® Seal & Click to seal the short sides of the planks.

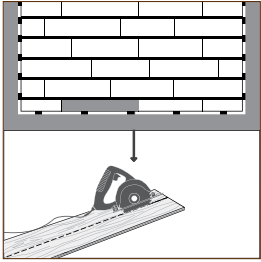


Avoid joints in the rubber strip near the bathtub or shower. If the distance is larger, the joints of the rubber strip must be cut as shown in the diagram and glued together with super glue.

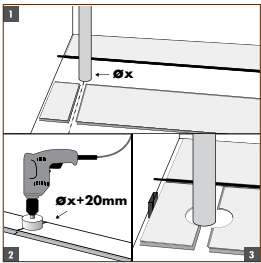


There must also be an 8 to 10 mm expansion joint between the last row and the wall. Keep this in mind when sawing the last row of panels.

OBSTACLES

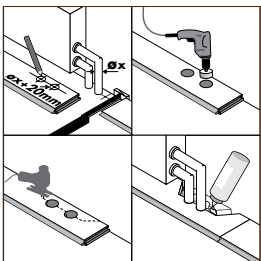


In rows where there is a pipe, make sure the pipe falls exactly in line with the joint between two panels. Take a drill bit with the same diameter as the pipe plus 20 mm. Click the panels together on the short side and drill a hole centred on the joint between the two panels. Now you can install the panels on the floor.

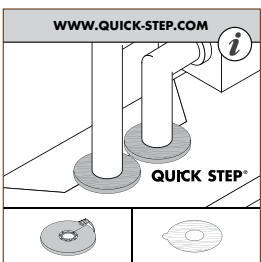


Proceed as follows:

1. Measure where the pipe will come through the plank. Don't forget to allow for the expansion joint.
2. Take a drill bit measuring the diameter of the pipe plus +20 mm for the expansion. Drill through the panel where the pipe will come through.
3. Extend the hole to the edge of the panel.
4. Lay the panel around the pipe.
5. Take another panel and saw a piece that fits exactly in the remaining hole, and glue this piece with wood glue.

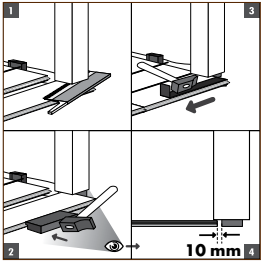


For a perfect finish around pipes, use Quick-Step® pipe covers or an elastic paste (Quick-Step® Kit). When laying floors in damp rooms (such as bathrooms), always apply Quick • Step® Kit around pipes and other conduits, and cover with Quick • Step® pipe covers.

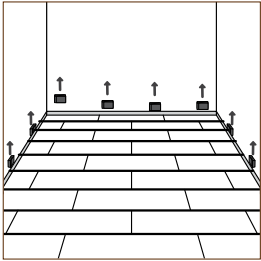


When sawing the panels ensure that the expansion joint under the door is at least 10 mm. If you cannot lift the panel, use an adapted tapping block or crowbar and hammer to tap the panels together. Always use Quick • Step® Kit under door frames in damp rooms (such as bathrooms).

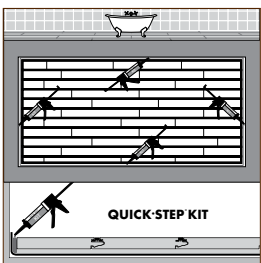
FINISHING



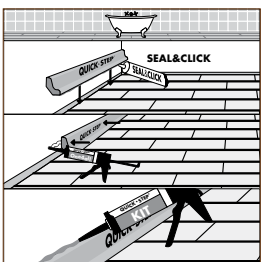
Remove all spacers.



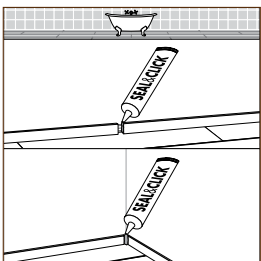
In damp rooms (such as bathrooms) use the Quick-Step® Kit to fill the joints between the floor and the walls. It is important that the kit does not touch the wall.



Apply Quick-Step® Seal & Click to the bottom of the skirting-board to seal the joint between the floor and skirting-boards for installations in humid rooms (such as bathrooms). Install the skirting-boards on the plastic foil projecting upwards from the floor. Never attach the skirting-boards to the floor. This allows the floor to expand and contract under the skirting-board. In places where profiles and skirting-boards cannot be fitted, fill expansion gaps with elastic kit (Quick-Step® kit). Use Quick-Step® Kit in damp rooms (such as bathrooms) to finish the top of the skirting-boards (available in colours that match your floor).

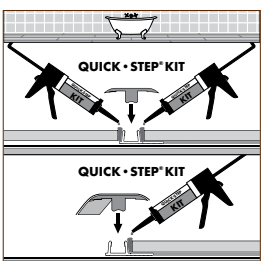


When installing in damp rooms (such as bathrooms) you must also use Quick-Step® Seal & Click to seal the joints between skirting-boards.

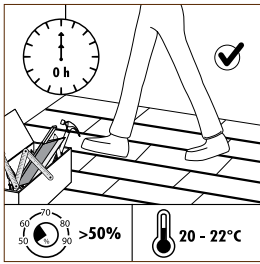


In damp rooms (such as bathrooms) use the Quick-Step® Kit to fill the space between the floor and the attachment profiles.

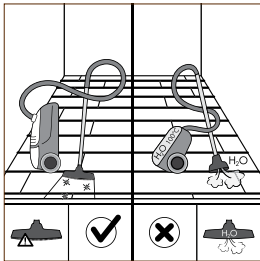
MAINTENANCE



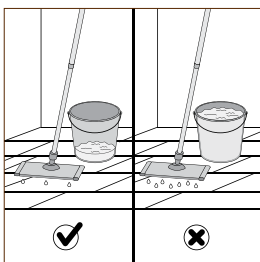
You can walk on the floor during and immediately after installation. Ensure that humidity in the room is always at least 50%. Use a humidifier if necessary.



Dry maintenance is possible with Quick-Step® microfiber cloth or with a vacuum cleaner. Make sure it is equipped with soft wheels and a special parquet brush to avoid scratches on your floor. Never use a steam cleaner.

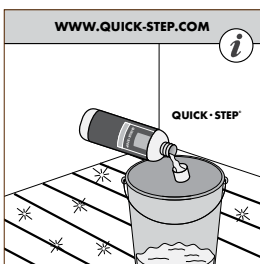


Wet maintenance is absolutely forbidden.



For slightly damp maintenance, we advise Quick-Step® maintenance products (see instructions provided with these products). Be aware that the use of other cleaning products might damage your floor. Always wipe dry immediately until no more moisture is visible on the floor. We strongly recommend dry maintenance only for bevelled-edged products.

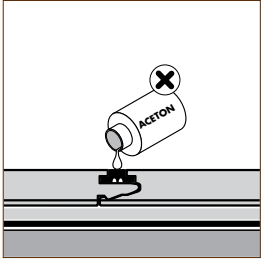
The smooth surface of your laminate means it never absorbs dirt or dust. Remove stubborn stains carefully with Quick-Step® Force stain remover or some acetone. Never use scouring products. Never use wax or varnish on the floor. Prevent moisture creeping between the panels and under the floor.



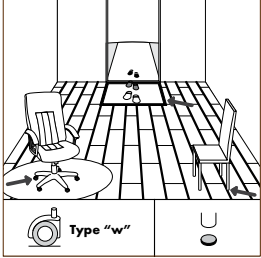
Remove water immediately.



Do not use acetone to clean the rubber strip.



Protect furniture and chair legs with strong felt caps.
Avoid bringing dirt, water and sand indoors by providing a suitable floor mat at the door.
Use (office) chairs and seats with soft casters Type W (EN 12590) that are suitable for a laminate floor and/or use a suitable desk mat.



Lift furniture and never drag it over the floor.

